

CARDIFF BLUES COMMUNITY FOUNDATION

Activity PACK



YOUR PLAYER PROFILE

NAME:

AGE:

DATE OF BIRTH:

BIRTHPLACE:

FAVOURITE SPORT :

FAVOURITE FOOD :

INTERESTING FACT :

PLAYER PHOTO



PLAYER PROFILE : *MATHS*

NAME : *JOSH NAVIDI*

DATE OF BIRTH : *DEC 30TH 1990*

BIRTHPLACE : *BRIDGEND*

POSITION : *BACK ROW*

FIRST BLUES CAP : *2009*

TOTAL BLUES CAPS : *173*

WELSH CAPS : *24*

TRIES SCORED : *21*



1. HOW OLD IS JOSH NAVIDI?

2. HOW MANY YEARS HAS HE PLAYED FOR CARDIFF BLUES?

3. HOW MANY CAPS DOES JOSH HAVE IN TOTAL?

4. IF A TRY IS WORTH 5 POINTS, HOW MANY POINTS HAS JOSH SCORED?
(ASK AN ADULT FOR HELP IF YOU GET STUCK!)



meet OUR MASCOT

this is **BRUISER**! He is the mascot for the CARDIFF BLUES.
He seems to have lost his COLOUR!
COULD YOU COLOUR HIM IN FOR US?



CARDIFF BLUES COMMUNITY FOUNDATION

WORDSEARCH

CAN YOU FIND ALL THE WORDS RELATING TO THE CARDIFF BLUES, AND TO RUGBY, IN THE WORD SEARCH BELOW?



TRY

JAROD EVANS

NICK WILLIAMS

JOSH NAVIDI

CARDIFF BLUES

RUGBY POSTS

REFEREE

TACKLE

SCRUM

LINEOUT

RUGBY BALL

RUGBY PLAYER

RUGBY SHIRT

BACKS

FORWARDS

TOMOS WILLIAMS



CARDIFF BLUES SHOP

WELCOME TO THE CARDIFF BLUES SHOP.
CAN YOU ANSWER THE QUESTIONS BELOW?



£20



£7



£5



£10

1. HOW MUCH WOULD IT COST TO BUY A SHIRT & SHORTS?

2. HOW MUCH WOULD IT COST TO BUY TWO BOBBLE HATS?

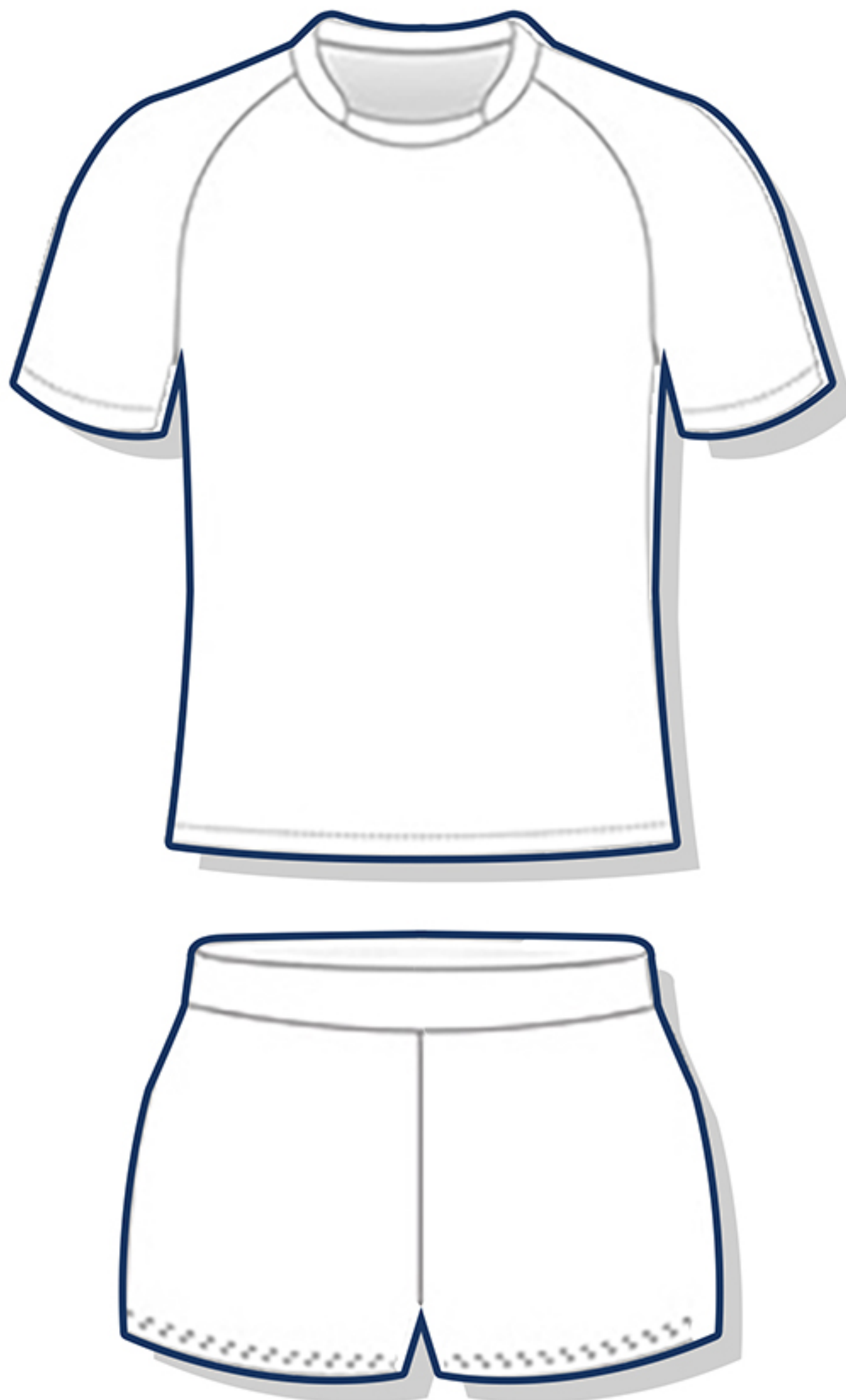
3. HOW MUCH WOULD IT COST TO BUY A SHIRT, SHORTS & SOCKS?

4. HOW MUCH WOULD IT COST TO BUY ONE OF EACH ITEM?



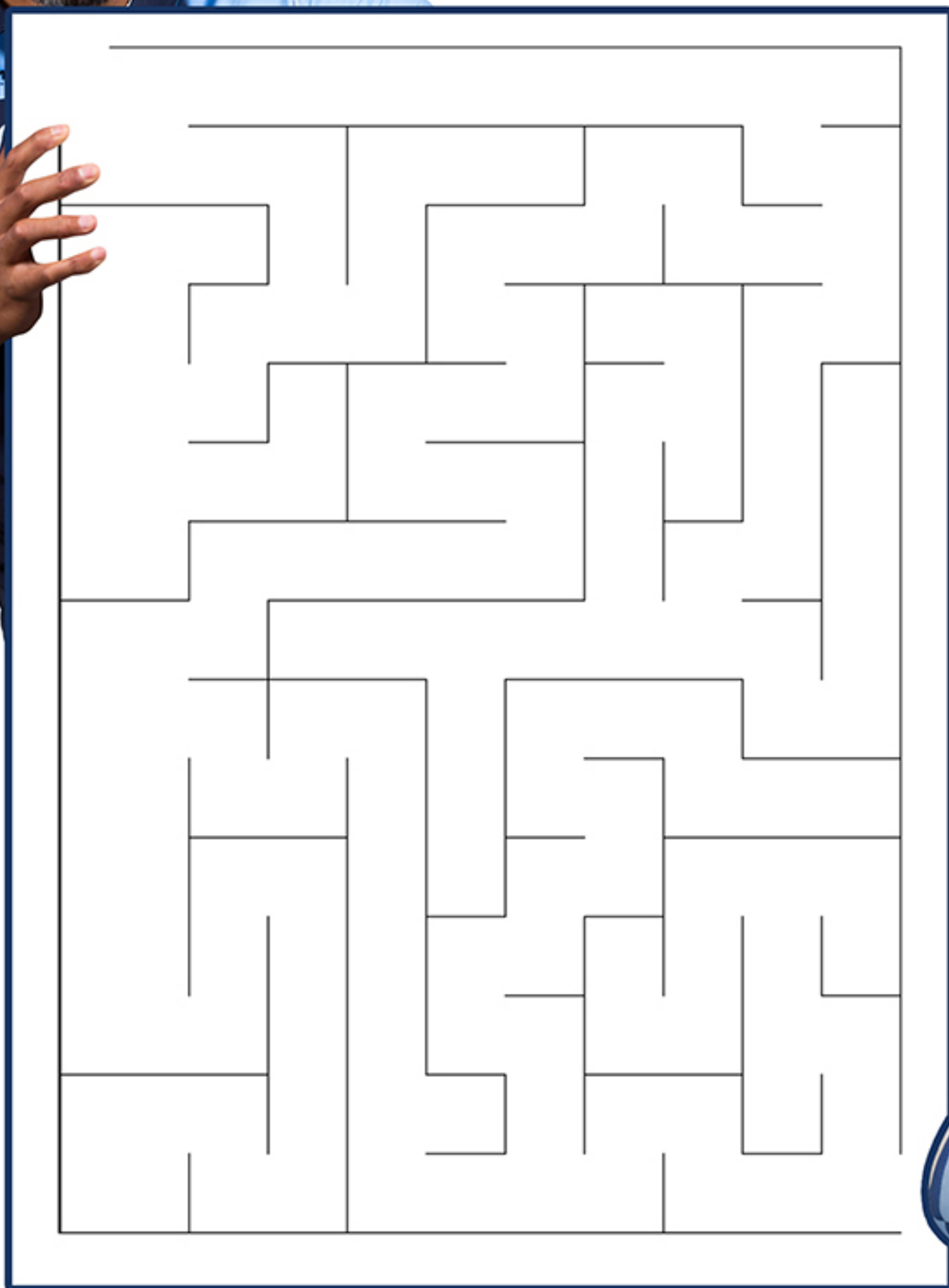
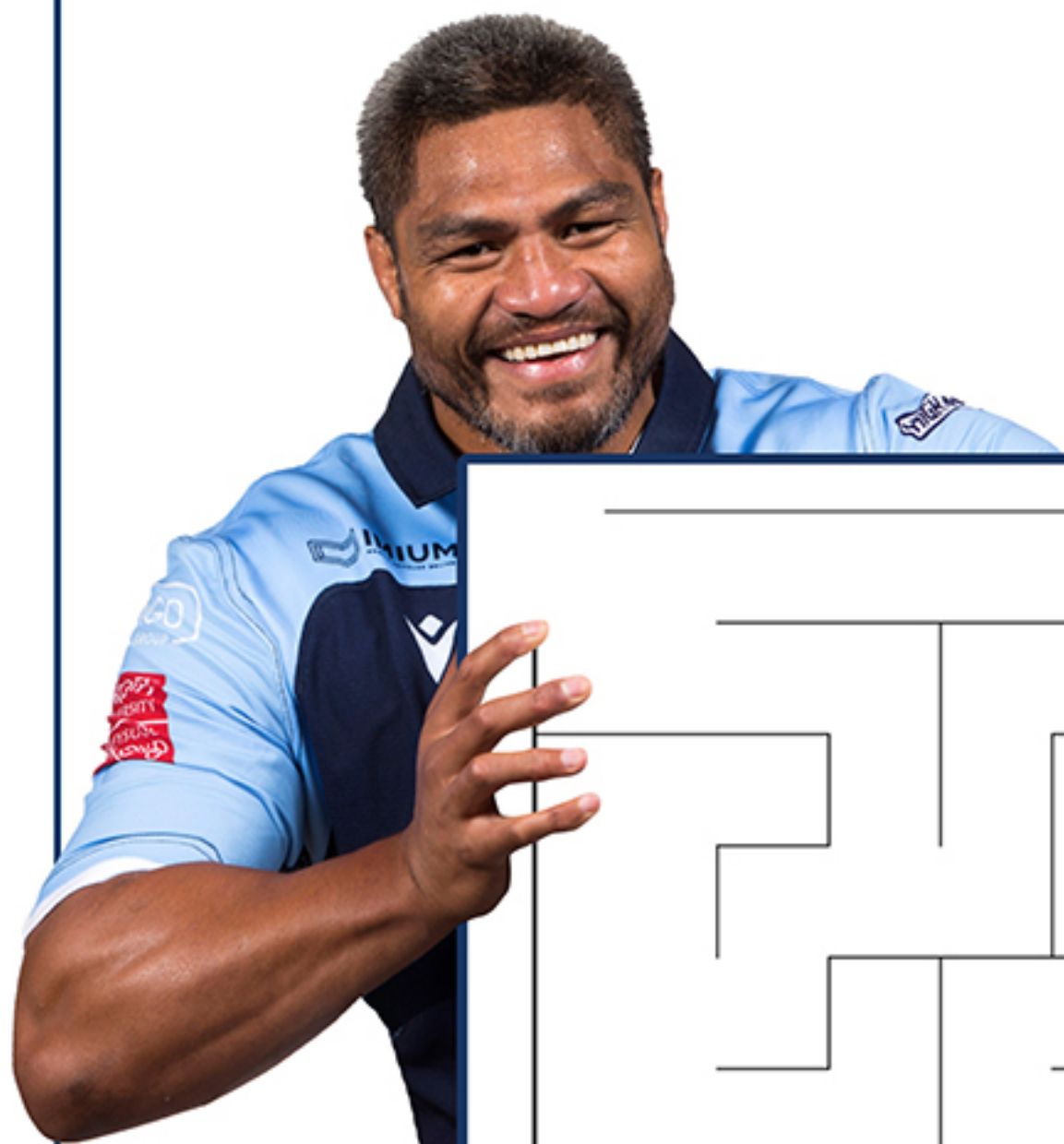
DESIGN YOUR OWN KIT

WELCOME TO THE CARDIFF BLUES SHOP.
CAN YOU ANSWER THE QUESTIONS BELOW?



MAZE MADNESS

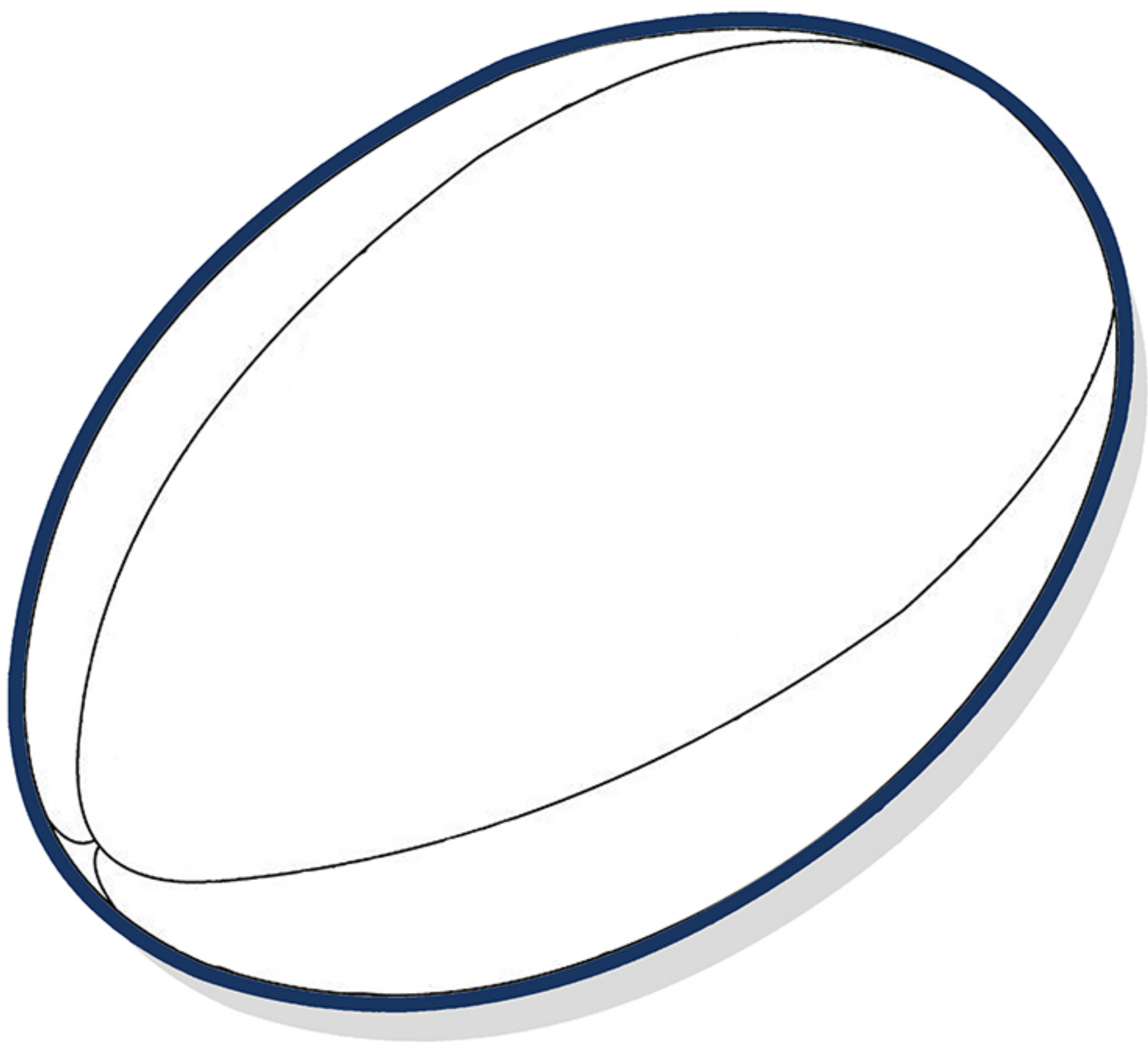
CAN YOU HELP NICK WILLIAMS FIND HIS WAY TO HIS RUGBY BALL SO HE CAN TAKE IT TO TRAINING?



CARDIFF BLUES COMMUNITY FOUNDATION

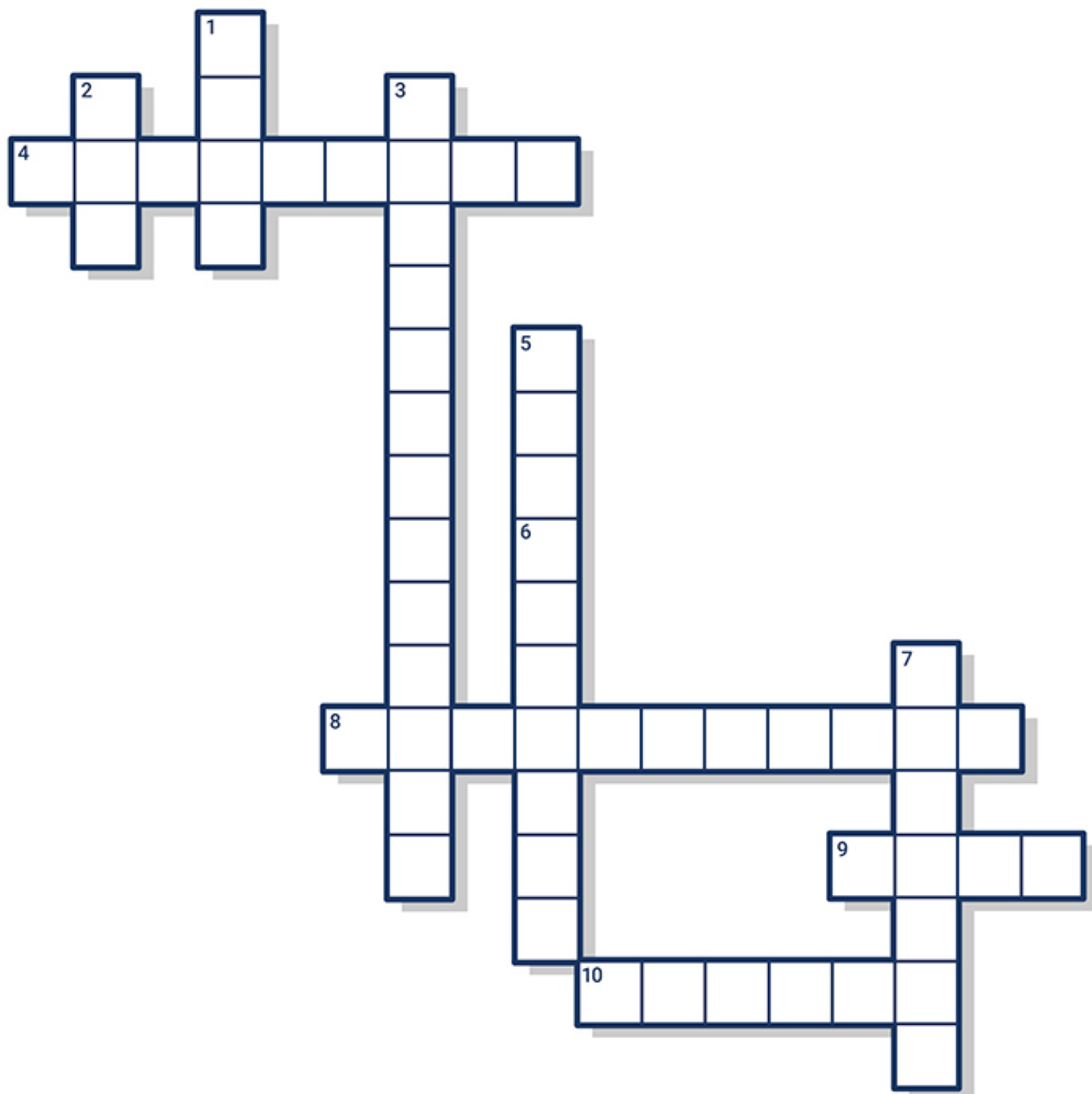
DESIGN YOUR OWN RUGBY BALL

COULD YOU DESIGN A RUGBY BALL TO GO WITH
YOU NEWLY DESIGNED RUGBY KIT?



CROSSWORD

CAN YOU FIT THE WORDS IN THE CROSSWORD BELOW?



RUGBY SHIRT

PASS

ARMS PARK

CARDIFF BLUES

BOOTS

BRUISER

KICK

RUGBY BALL

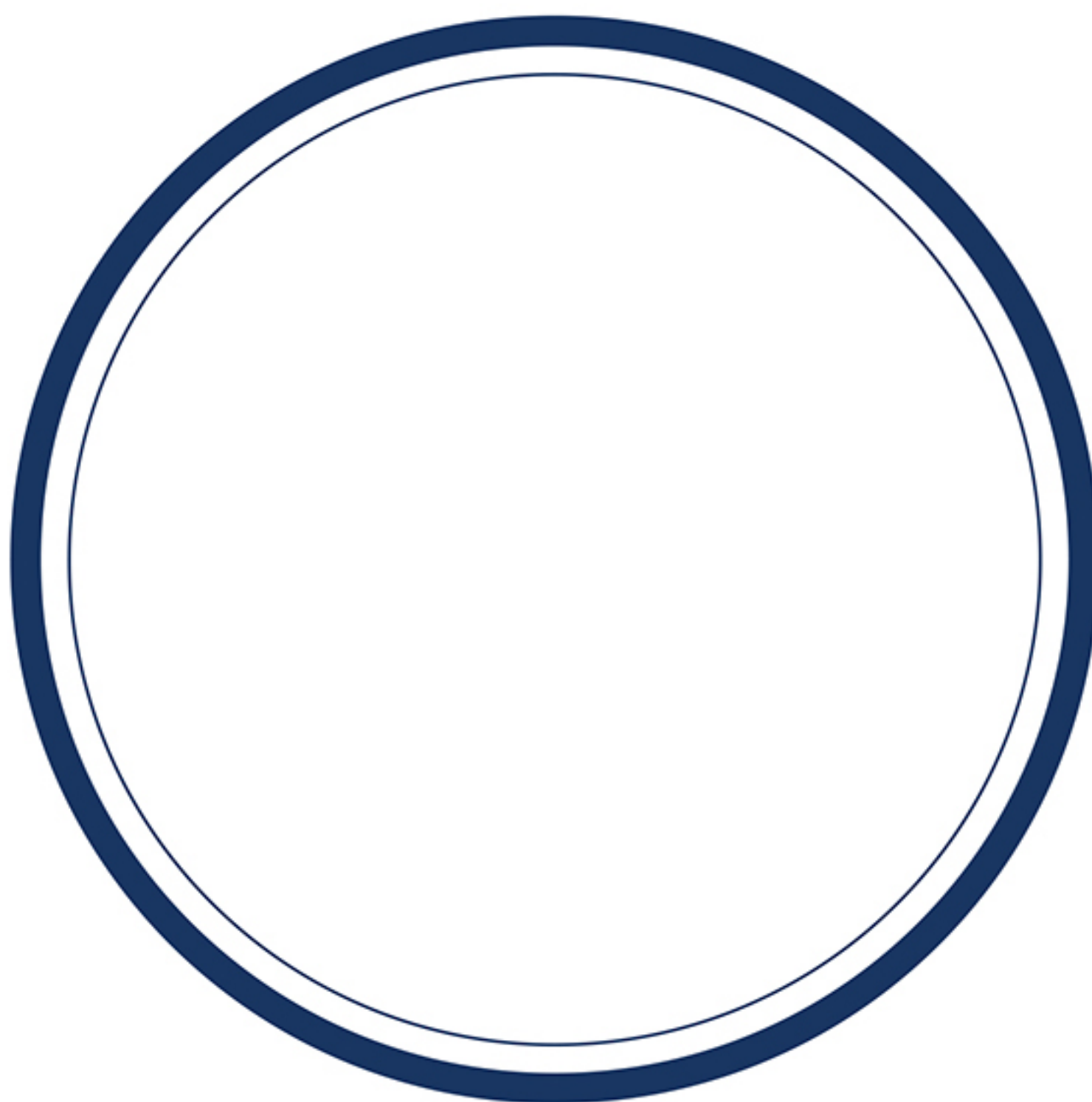
TACKLE

TRY



POST MATCH MEAL

RUGBY PLAYERS NEED TO MAKE SURE THEY EAT HEALTHY FOOD. COULD
DRAW A POST-MATCH MEAL FOR ONE OF THE CARDIFF BLUES PLAYERS?



Dot to Dot

CAN YOU CONNECT THE DOTS TO FIND OUT WHAT THIS PLAYER IS DOING?



WHAT IS THE PLAYER THAT YOU'VE DRAWN DOING?

.....



CARDIFF BLUES COMMUNITY FOUNDATION

FINAL QUIZ

CAN YOU ANSWER ALL THE QUESTIONS IN THE QUIZ
BY CIRCLING THE CORRECT ANSWER?

1. HOW MANY POINTS DO YOU GET FOR SCORING A TRY?

A. 5

B. 7

C. 4

2. WHERE DO THE CARDIFF BLUES PLAY AND TRAIN?

A. THE PRINCIPALITY STADIUM

B. CARDIFF CITY STADIUM

C. THE CARDIFF ARMS PARK

3. HOW MANY PLAYERS ARE ON THE PITCH FOR EACH TEAM DURING A GAME?

A. 15

B. 12

C. 16

4. WHAT KIND OF ANIMAL IS THE CARDIFF BLUES MASCOT?

A. DRAGON

B. SHEEP

C. BEAR

5. TO SCORE A CONVERSION OR A PENALTY WHERE DO YOU
HAVE TO KICK THE BALL THROUGH?

A. THE STANDS

B. THE RUGBY POSTS

C. THE REFEREE'S HANDS

6. IN RUGBY, WHICH WAY ARE YOU NOT ALLOWED TO PASS THE BALL?

A. BACKWARDS

B. THROUGH YOUR LEGS

C. FORWARDS



FINAL QUIZ - ANSWERS

MAKE SURE YOU AREN'T LOOKING AT THE ANSWERS
UNTIL YOU HAVE FINISHED THE QUIZ!

1. HOW MANY POINTS DO YOU GET FOR SCORING A TRY?

A. 5

2. WHERE DO THE CARDIFF BLUES PLAY AND TRAIN?

C. THE CARDIFF ARMS PARK

3. HOW MANY PLAYERS ARE ON THE PITCH FOR EACH TEAM DURING A GAME?

A. 15

4. WHAT KIND OF ANIMAL IS THE CARDIFF BLUES MASCOT?

C. BEAR

5. TO SCORE A CONVERSION OR A PENALTY WHERE DO YOU HAVE TO KICK
THE BALL THROUGH?

B. THE RUGBY POSTS

6. IN RUGBY, WHICH WAY ARE YOU NOT ALLOWED TO PASS THE BALL?

C. FORWARDS



WE HOPE YOU'VE ENJOYED LEARNING WITH THE

CARDIFF BLUES COMMUNITY FOUNDATION

TO KEEP UP TO DATE WITH EVERYTHING THAT GOES
ON IN THE FOUNDATION FOLLOW US ON:



[@CBLUESCOMMUNITY](https://twitter.com/CBLUESCOMMUNITY)



[@CARDIFF_BLUES_COMMUNITY](https://www.instagram.com/CARDIFF_BLUES_COMMUNITY)



[@CBLUESCOMMUNITY](https://www.facebook.com/CBLUESCOMMUNITY)

